

## FEATURES

- USB to Temperature /Relative Humidity and Dew Point Logger / Recorder
- 0 to +100%RH Measurement Range
- Measurement Range -35 to +80°C (-31 to +176°F)
- USB Interface for Set-up and Data Download
- User-Programmable Alarm Thresholds for %RH & T
- Many uses, commercial, industrial, laboratory
- Status Indication via Red and Green LED's
- Supplied with Replaceable Internal Lithium Battery and Windows Control Software
- Environmental Protection to IP 67 Protection



## SETUP SOFTWARE:

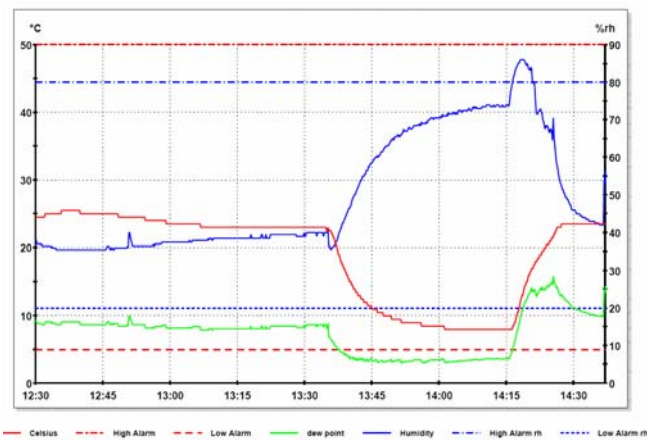
Easy to install and use, the control software runs under Windows 98, 2000 and XP (Home and Professional Editions). It allows the user to set up and download any USB-TEMP/RH. Unique names may be given to multiple logger / recorders.

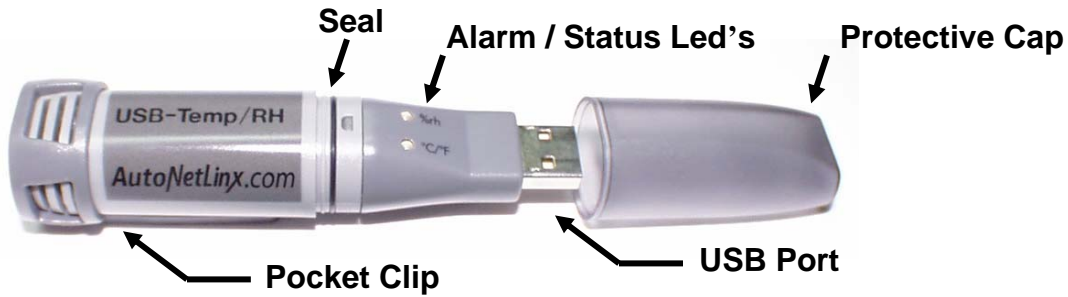
## DESCRIPTION:

**Automation NetLinx's USB Temperature Relative Humidity and Dew Point** data logger / recorder measures and stores up to 16,382 relative humidity and 16,382 temperature readings over 0 to 100%RH and -35 to +80°C (-31 to +176°F) measurement ranges. The user can easily set up the logging rate and start time, and download the stored data by plugging the module straight into a PC's USB port and running the purpose designed software under Windows 98, 2000 or XP. Relative humidity, temperature and dew point (the temperature at which water vapor present in the air begins to condense) data can then be graphed, printed and exported to other applications. The data logger is supplied complete with a long-life lithium battery, which can typically allow logging for a year. Status indication is via flashing red and green LEDs. The logger is protected against ingress from water and dust to IP67 standard when the plastic cap and seal are fitted.

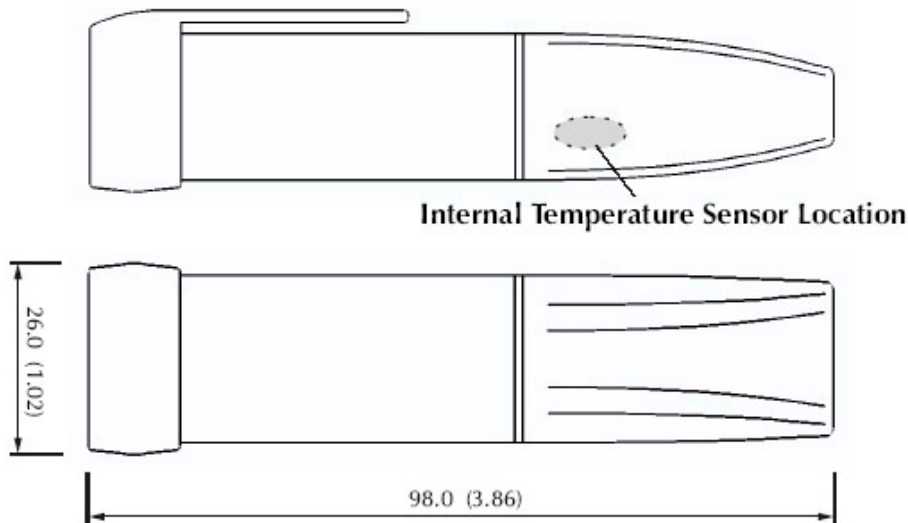
## DATA LOGGING OPTIONS

- Logger Name
- °C, °F
- Logging Rate (10s, 1m, 5m, 30m, 1hr, 6hr, 12hr)
- High and Low Alarms for Humidity and Temperature
- Start Date and Start Time





**PACKAGE DIMENSIONS:**



Specification		Min.	Typ.	Max.	Unit
Relative Humidity	Measurement range	0		100	%RH
	Repeatability (short term)		±0.2		%RH
	Accuracy (overall error) (20-80%RH)		±3.5**		%RH
	Response time		5		sec
	Long term stability		1		%RH/Yr
Temperature	Measurement range	-35 (-31)		+80 (176)	°C (°F)
	Repeatability		±0.2 (±0.4)		°C (°F)
	Accuracy (overall error)		±1 (±2)	±2.5 (±5)	°C (°F)
	Response time		20		sec
Dew Point	Accuracy (overall error) (25°C, 40-100%RH)		±2 (±4)***		°C (°F)
Logging rate		every 10s		every 12hr	-
Operating temperature range		-35 (-31)		+80 (176)	°C (°F)
1/2AA 3.6V Lithium Battery Life*			1		Year

\* Depending on sample rate, ambient temperature and use of alarm LEDs

\*\* This specifies the overall error in the logged readings, for relative humidity measurements between 20 and 80%RH.

\*\*\* This specifies the overall error in the calculated dew point, for relative humidity measurements between 40 and 100%RH at 25°C.

See page 4 of this datasheet for accuracy graphs.

**ORDERING INFORMATION – Model USB-TEMP**

USB-TEMP/RH	Includes - Logger, Software on Disk, Battery, Plug and Play Ready!
BAT 3.6V	Lithium replacement battery, 1/2AA.